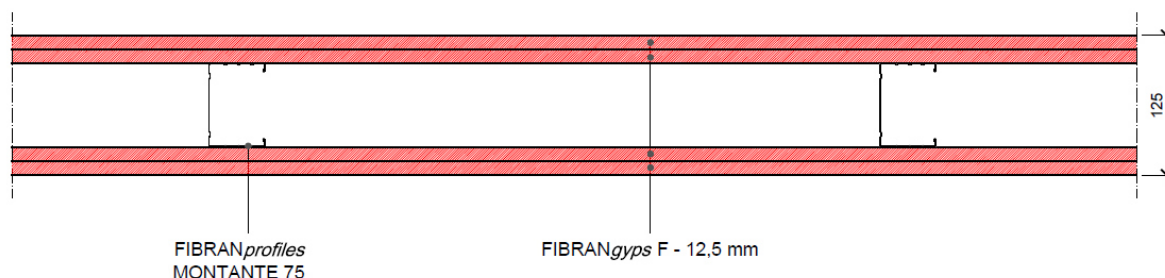


Partition FIBRAN FW 125/75

Partition drywall EI120 - thickness 125 mm



COMPONENTS

Plasterboards

2 layers of **FIBRANGyps F** both side, thickness **12,5 mm**, CE marked– **type F** according to EN 520, classified **A+** according to EN ISO 16000-09, fire reaction **A2-s1, d0** according to EN 13501-1, weight 9,8 kg/m², water vapor resistance factor $\mu=10$, thermal conductivity $\lambda=0,25$ W/m K and specific heat $cp=1,03$ kJ/kg K according to EN 10456

Metal frame thickness 0,6 mm conform to EN 14195

Channels **FIBRANprofiles GUIDA 75** mechanically fixed to the floor and ceiling using fixing nails at a maximum spacing of 500 mm;

Studs **FIBRANprofiles MONTANTE 75**, max axial spacing every 600 mm, slotted to allow passage of the installations

Screws

Self-drilling screws **FIBRANGyps SCREW 3,5 x 25** and **3,5 x 35 mm** with resistance in salt spray test not less than 72 hours, fixed max 150 mm each

Adhesive tape and joint filler

Treatment of the joints between plasterboards and head of screws with **FIBRANGyps JF**, CE marked 3B according to EN 13963, and reinforcing tape **FIBRANGyps TAPE** according to the level quality Q2 (Eurogypsum)

Partition FIBRAN FW 125/75

Technical features



Fire rating

Fire rating: EI 120 (Classification Report LAPI 103/C/12-160FR according to EN 1364-1)

Max height: 17,50 m with technical dossier

Mechanical performance

FIBRANprofiles channels and studs DIN 75 mm, max axial spacing every 600 mm, thickness 6/10 mm conform to UNI EN 14195.

Profiles must be designed according to local regulation and specific application.

In case of walls longer than 15 meters, an expansion joint must be made every 10 meters or at structural joints

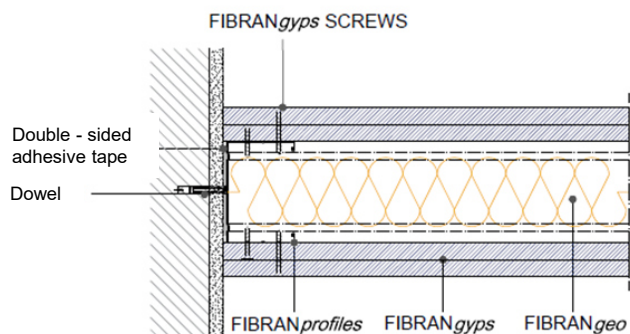
Finishing

According to quality level required (Eurogypsum). Use FIBRANgyps JF READY MIX for level Q4

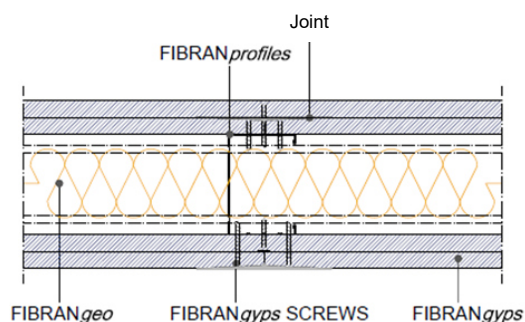
Sustainability

FIBRANgyps plasterboards are classified A+, the best one according to EN ISO 16000-09, with regards to the emission of formaldehyde, acetaldehyde and other substances.

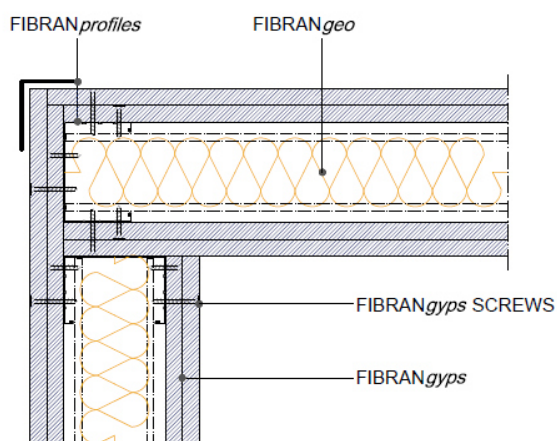
Partition FIBRAN FW 125/75 Construction details



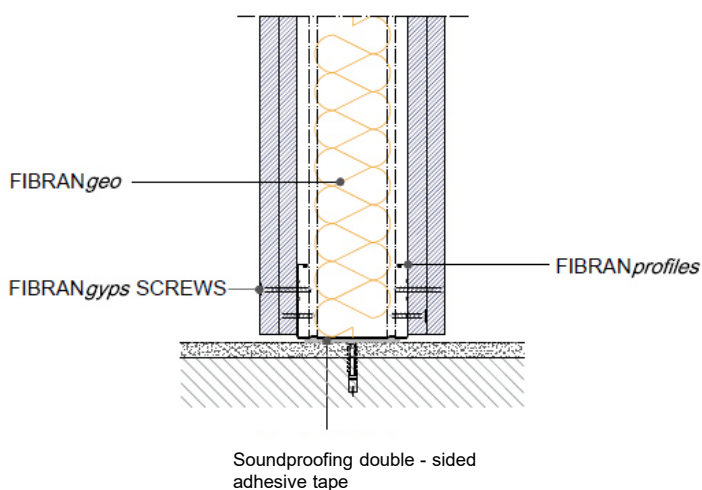
Detail. 1 WALL CONNECTION



Detail. 2 JOINT

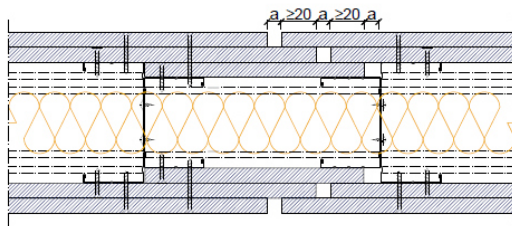


Detail. 3 CORNER FITTING

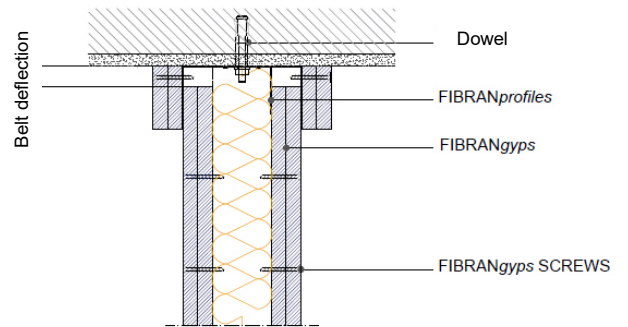


Detail. 4 FLOOR CONNECTION

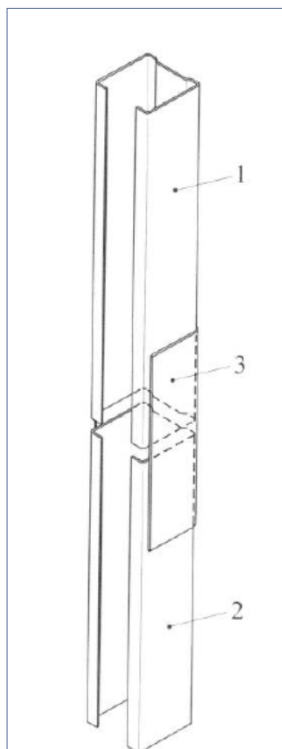
Partition FIBRAN FW 125/75 Construction details



Detail. 5 EXPANSION JOINT



Detail. 6 DESOLIDARIZZAZIONE
FLOOR - WALL



N.B. Indicative drawings



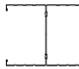

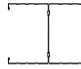
LEGEND

- 1. stud
- 2. stud
- 3. stiffening element made with a channel of the same width as the stud; lenght at least 10 times the width

Detail. 7 JOINT BETWEEN PROFILES

Partition FIBRAN FW 125/75

Quantities of material

Indicative quantities for square meter of partition					
		quantity/m ²		quantity/m ²	
		centre 600 mm		centre 400 mm	
Description	UM				
FIBRAN <i>gy</i> ps	m ²	4,2	4,2	4,2	4,2
FIBRAN <i>profiles</i> studs	m	2	4	2,6	5,2
FIBRAN <i>profiles</i> channels	m	0,7	0,7	0,7	0,7
Joint filler FIBRAN <i>gy</i> ps JF	kg	0,7	0,7	0,7	0,7
Adhesive tape FIBRAN <i>profiles</i>	m	1	1	1	1
FIBRAN <i>gy</i> ps TAPE	m	1,67	1,67	1,67	1,67
FIBRAN <i>gy</i> ps SCREW 25mm	pz	20	20	25	25
FIBRAN <i>gy</i> ps SCREW 35mm	pz	25	25	30	30