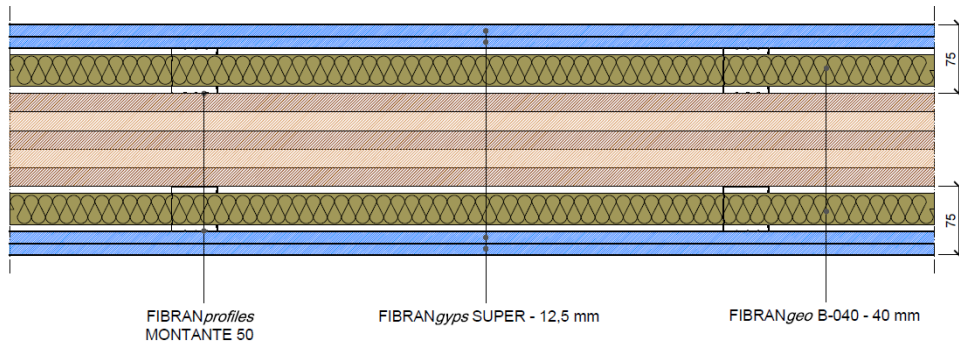


# Partition FIBRAN LW XLAM 75+75/50+50 mw

Partition drywall  $R_w = 70$  dB - REI120 - thickness 75 + 75 mm



## COMPONENTS

### Plasterboards

2 layers of **FIBRANgyps SUPER** both side, thickness **12,5 mm**, CE marked– **type D, I, F, H1, R** according to EN 520, classified **A+** according to EN ISO 16000-09, fire reaction **A2-s1,d0** according to EN 13501-1, controlled density more than 1000 kg/m<sup>3</sup>, enhanced surface hardness, improved core adhesion at high temperature, reduced water absorption rate (total <5% ; surface 180 g/m<sup>2</sup>), higher strength (flexural breaking load > 725 N), weight 12,7 kg/m<sup>2</sup>, water vapor resistance factor  $\mu=10$ , thermal conductivity  $\lambda=0,25$  W/m K and specific heat  $cp=1,03$  kJ/kg K according to EN 10456

### Metal frame thickness 0,6 mm conform to EN 14195

Channels **FIBRANprofiles GUIDA 50** mechanically fixed to the floor and ceiling using fixing nails at a maximum spacing of 500 mm;

Studs **FIBRANprofiles MONTANTE 50**, max axial spacing every 600 mm, slotted to allow passage of the installations

### Insulation board in cavity

**FIBRANgeo B-040**, biosoluble stone wool board, density **40 kg/m<sup>3</sup>**, thickness **40+40 mm**, fire reaction A1 according to EN 13501-1, thermal conductivity 10°C  $\lambda_D = 0,034$  W/m K according to EN 12667 and EN 12939, water vapour diffusion resistance factor  $\mu=1$  according to EN 12086, specific heat capacity  $cp=1,03$  kJ / kg K according to EN 10456

### Screws

Self-drilling screws **FIBRANgyps SUPER SCREW 3,8 x 23 e 39 mm** with resistance in salt spray test not less than 72 hours, fixed max 250 mm each

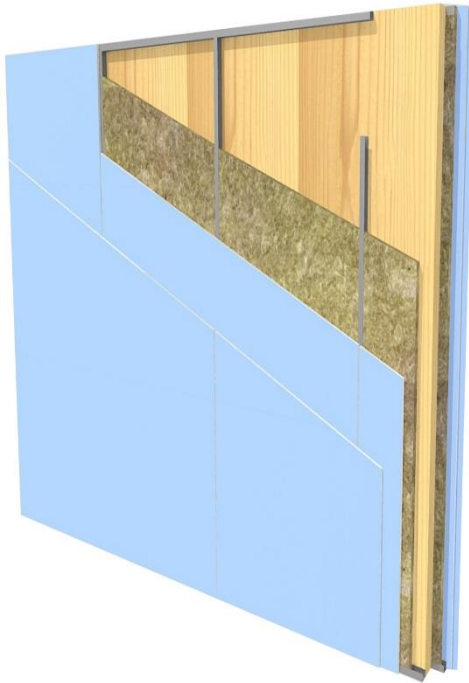
### Adhesive tape and joint filler

Closed cell polyethylene foam adhesive tape **FIBRANgyps** to be applied on the entire perimeter of the metal structure, to eliminate the possible acoustic bridges due to the transmission of noise through the building structures.

Treatment of the joints between plasterboards and head of screws with **FIBRANgyps JF**, CE marked 3B according to EN 13963, and reinforcing tape **FIBRANgyps TAPE** according to the level quality Q2 (Eurogypsum)

# Partition FIBRAN LW XLAM 75+75/50+50 mw

## Technical features



### Acoustics

**R<sub>w</sub> = 70 dB** – test report Istituto Giordano n° 324835

### Fire rating

**Fire rating: EI 120** (Classification Report CSI 2173FR according to EN 1364-1)

Max height: 4,00 m

### Thermal Insulation

**U = 0,26 W/m<sup>2</sup>K** – calculated with software

### Mechanical performance

**FIBRANprofiles** channels and studs DIN 50 mm, max axial spacing every 600 mm, thickness 6/10 mm conform to EN 14195.

Profiles must be designed according to local regulation and specific application.

In case of walls longer than 15 meters, an expansion joint must be made every 10 meters or at structural joints

### Finishing

According to quality level required (Eurogypsum). Use FIBRANGyps JF READY MIX for level Q4

### Sustainability

FIBRANGyps plasterboards are classified A+, the best one according to EN ISO 16000-09, with regards to the emission of formaldehyde, acetaldehyde and other substances

### Impact resistance hard body

According to ETAG 003, non-load bearing partition walls, 1 kg steel sphere falling 10 times from different heights from 60 to 160 cm (equal to 6 Nm) without any surface damage- passed

### Impact resistance soft body

According to ETAG 003, non-load bearing partition walls, 50 kg bag falling 3 times from different positions from 174 cm height (equal to 120 Nm) without any functional damage- passed

# Partition FIBRAN LW XLAM 75+75/50+50 mw

## Technical features



### FLEXURAL BREAKING LOAD

	FIBRANgyps A13	FIBRANgyps SUPER 13	FIBRANgyps A15	FIBRANgyps SUPER 15
Longitudinal flexion EN 520	> 550 N	> 725 N	> 650 N	> 870 N
Transversal flexion EN 520	> 210 N	> 300 N	> 250 N	> 360 N

### RESISTANCE TO LOADS\*

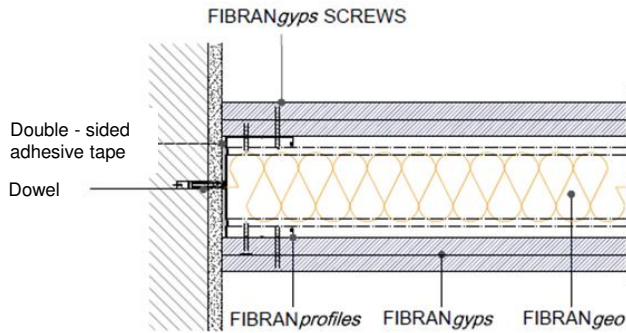
FIXINGS	1 layer FIBRANgyps SUPER 13		2 layers FIBRANgyps SUPER 13		2 layers FIBRANgyps SUPER 13	
	Shear strength (kg)		Shear strength (kg)		Traction (kg)	
	Laboratory values	Recommended values	Laboratory values	Recommended values	Laboratory values	Recommended values
Nail 	36	14	-	-	-	-
Metallic dowel "Gold" 	-	-	80	32	60	24
Metallic dowel "Molly" 	120	48	180	72	150	60

### ECCENTRIC LOADS RESISTANCE \*

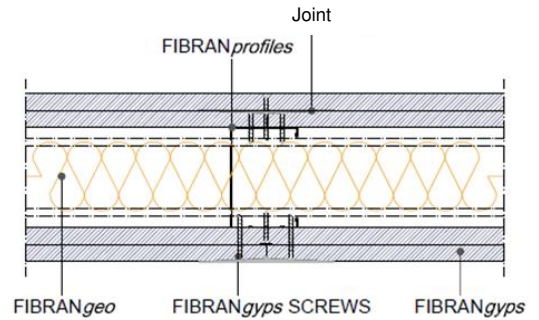
 	<p><b>Loading test on shelf</b></p> <p>Shelves loaded up to 48 kg can be fixed directly to double layer of FIBRANgyps SUPER, using metallic dowels Molly at maximum distance of 50 cm. The result of the laboratory test is 120 kg.</p>	<b>48kg</b>
	<p>* Recommended values obtained by applying to the test values a safety coefficient of 2,5 (as required by UNI 13964).</p> <p>Test report n°137, by Tecnolab di Napoli and test reports n°327335/n°3273336 by Istituto Giordano of Bellaria.</p>	

# Partition FIBRAN LW XLAM 75+75/50+50 mw

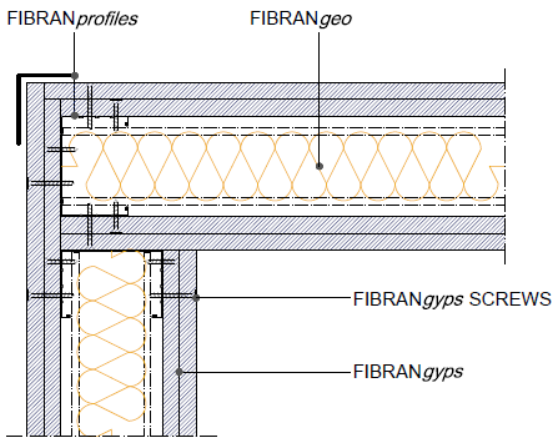
## Construction details



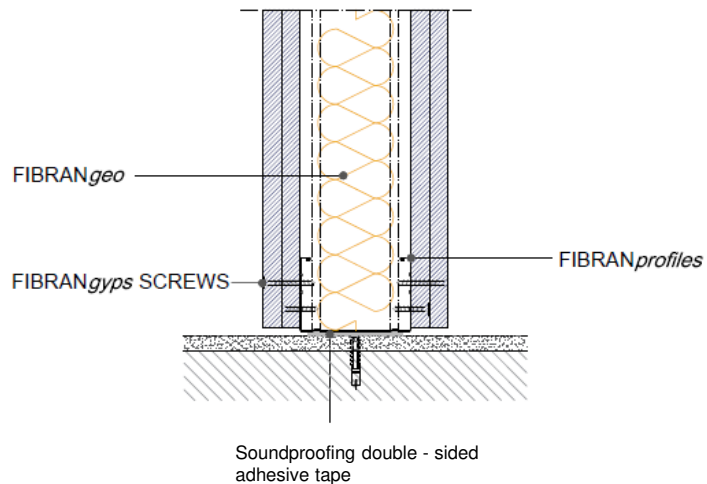
Detail. 1 WALL CONNECTION



Detail. 2 JOINT



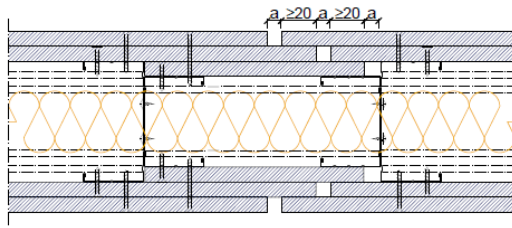
Detail. 3 CORNER FITTING



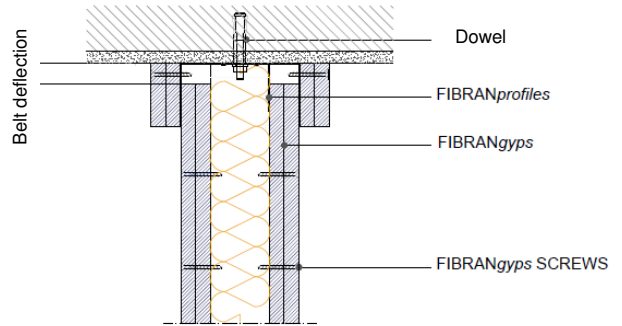
Detail. 4 FLOOR CONNECTION

# Partition FIBRAN LW XLAM 75+75/50+50 mw

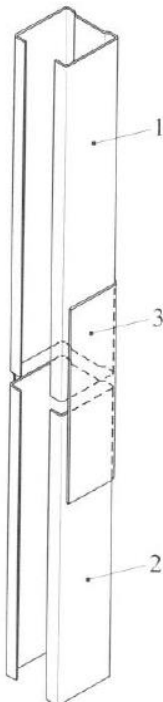
## Construction details



Detail. 5 **EXPANSION JOINT**



Detail. 6 **DESOLIDARIZZAZIONE FLOOR - WALL**



**LEGEND**



- 1. stud
- 2. stud
- 3. stiffening element made with a channel of the same width as the stud; lenght at least 10 times the width

Detail. 7 **JOINT BETWEEN PROFILES**

# Partition FIBRAN LW XLAM 75+75/50+50 mw

## Quantities of material

### Indicative quantities for square meter of partition

		quantity/m <sup>2</sup>		quantity/m <sup>2</sup>	
		centre 600 mm		centre 400 mm	
Description	UM				
FIBRAN <i>gy</i> ps	m <sup>2</sup>	4,2	4,2	4,2	4,2
FIBRAN <i>profiles</i> studs	m	4	8	5,2	10,4
FIBRAN <i>profiles</i> channels	m	1,4	1,4	1,4	1,4
FIBRAN <i>geo</i>	m <sup>2</sup>	1,05	1,05	1,05	1,05
Joint filler FIBRAN <i>gy</i> ps <b>JF</b>	kg	0,7	0,7	0,7	0,7
Adhesive tape FIBRAN <i>profiles</i>	m	1	1	1	1
FIBRAN <i>gy</i> ps <b>TAPE</b>	m	1,67	1,67	1,67	1,67
FIBRAN <i>gy</i> ps <b>SUPER SCREW</b> 23mm	pz	20	20	25	25
FIBRAN <i>gy</i> ps <b>SUPER SCREW</b> 39mm	pz	25	25	30	30